

XY2CE1A250EX

Latching emergency stop trip wire switch, Telemecanique Emergency stop rope pull switches XY2C, RH side -1NC+1 NO, booted pushbutton



Main

| | |
|-------------------------------|--|
| Range of product | Telemecanique Emergency stop rope pull switches XY2C |
| Product or component type | Latching emergency stop trip wire switch |
| Device short name | XY2CE |
| Local signalling | Without pilot light |
| Reset | By booted push-button |
| Contacts type and composition | 1 NC + 1 NO |
| Trigger cable anchor point | RH side |

Complementary

| | |
|--|--|
| Number of cables | 1 |
| Trigger cable maximum length | 70 m |
| Housing colour | Red RAL 3000 |
| Auxiliary contacts operation | Slow-break |
| Connections - terminals | Screw clamp terminal, 1 x 0.5...2 x 1.5 mm ² |
| Tightening torque | 0.8...1.2 N.m |
| Cable entry number | 1 plain hole for ISO M20 cable gland 2 plain hole with blanking plug for |
| Marking | II2 D-Ex tb IIIC T85°C Db IP65 |
| Safety level | Can reach PL = e with the appropriate monitoring system and correctly wired conforming to EN/ISO 13849-1 Can reach category 4 with the appropriate monitoring system and correctly wired conforming to EN/ISO 13849-1 Can reach SIL 3 conforming to EN/IEC 61508 |
| Safety reliability data | B10d = 300000 value given for a life time of 20 years limited by mechanical or contact wear |
| Mechanical durability | 60000 cycles |
| Distance between cable supports | 10 m |
| [Ie] rated operational current | 3 A at 240 V, AC-15, A300 conforming to EN/IEC 60947-5-1 appendix A 0.27 A at 250 V, DC-13, Q300 conforming to EN/IEC 60947-5-1 appendix A |
| [Ithe] conventional enclosed thermal current | 10 A |
| [Ui] rated insulation voltage | 400 V (pollution degree 3) conforming to EN/IEC 60947-1 300 V conforming to UL 508 300 V conforming to CSA C22.2 No 14 |
| [Uimp] rated impulse withstand voltage | 4 kV |
| Positive opening | With conforming to EN/IEC 60947-5-1 section 3 |
| Maximum resistance across terminals | 25 MOhm conforming to EN/IEC 60255-7 category 3 25 MOhm conforming to NF C 93-050 method A |
| Short-circuit protection | 10 A cartridge fuse type gG conforming to EN/IEC 60269 |
| Width | 195 mm |
| Depth | 105 mm |
| Height | 142 mm |

Environment

| | |
|---------------------------------------|---|
| Standards | EN/IEC 60079-0 EN/IEC 60079-31 |
| Directives | 2014/34/EU - ATEX directive |
| Dust zone | Zone 21 - 22 |
| Product certifications | INERIS 04ATEX0015 IEC-Ex INE 16.0001X |
| Protective treatment | TC |
| Ambient air temperature for operation | -20...60 °C |
| Ambient air temperature for storage | -40...70 °C |
| Vibration resistance | 10 gn (f= 10...300 Hz) conforming to EN/IEC 60068-2-6 |
| Shock resistance | 50 gn 11 ms conforming to EN/IEC 60068-2-27 |
| Electrical shock protection class | Class I conforming to EN/IEC 61140 Class I conforming to NF C 20-030 |
| IP degree of protection | IP65 |

Packing Units

| | |
|------------------------------|-----------|
| Unit Type of Package 1 | PCE |
| Number of Units in Package 1 | 1 |
| Package 1 Weight | 1.591 kg |
| Package 1 Height | 9.5 cm |
| Package 1 width | 17.5 cm |
| Package 1 Length | 21.5 cm |
| Unit Type of Package 2 | S03 |
| Number of Units in Package 2 | 6 |
| Package 2 Weight | 10.019 kg |
| Package 2 Height | 30 cm |
| Package 2 width | 30 cm |
| Package 2 Length | 40 cm |

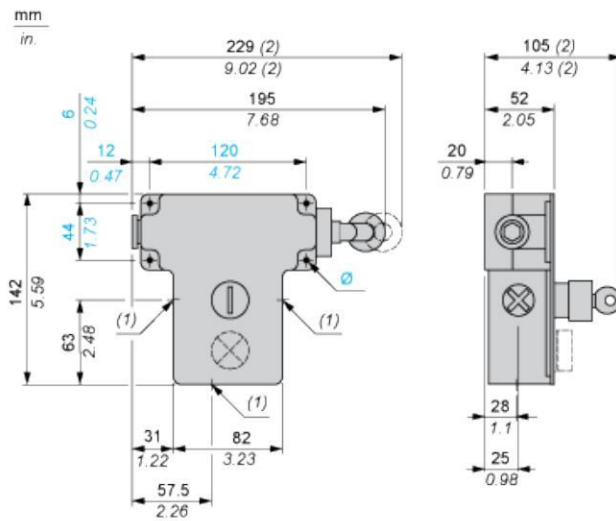
Offer Sustainability

| | |
|----------------------------|---|
| Sustainable offer status | Green Premium product |
| REACH Regulation | REACH Declaration |
| EU RoHS Directive | Pro-active compliance (Product out of EU RoHS legal scope) EU RoHS Declaration |
| Mercury free | Yes |
| RoHS exemption information | Yes |
| Environmental Disclosure | Product Environmental Profile |
| California proposition 65 | WARNING: This product can expose you to chemicals including: Diisononyl phthalate (DINP), which is known to the State of California to cause cancer, and Di-isodecyl phthalate (DIDP), which is known to the State of California to cause birth defects or other reproductive harm. For more information go to www.P65Warnings.ca.gov |

Contractual warranty

| | |
|----------|-----------|
| Warranty | 18 months |
|----------|-----------|

Dimensions

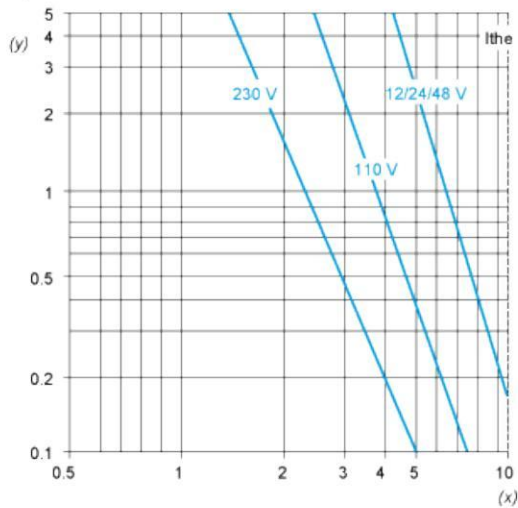


- (1) 3 plain holes for n° 13 (Pg 13.5) cable gland
- (2) Maximum extension.
- Ø 4 elongated holes Ø 6 mm/0.24 in.

Electrical Curves

AC Supply 50/60 Hz Inductive Circuit

2-pole Contact Block



Y Millions of operating cycles
X Current in A

DC Supply Power Broken in for 1 Million Operating Cycles Inductive Circuit

| | | | | |
|-----------|---|----|----|-----|
| Voltage | V | 24 | 48 | 120 |
| P_{max} | W | 13 | 9 | 7 |